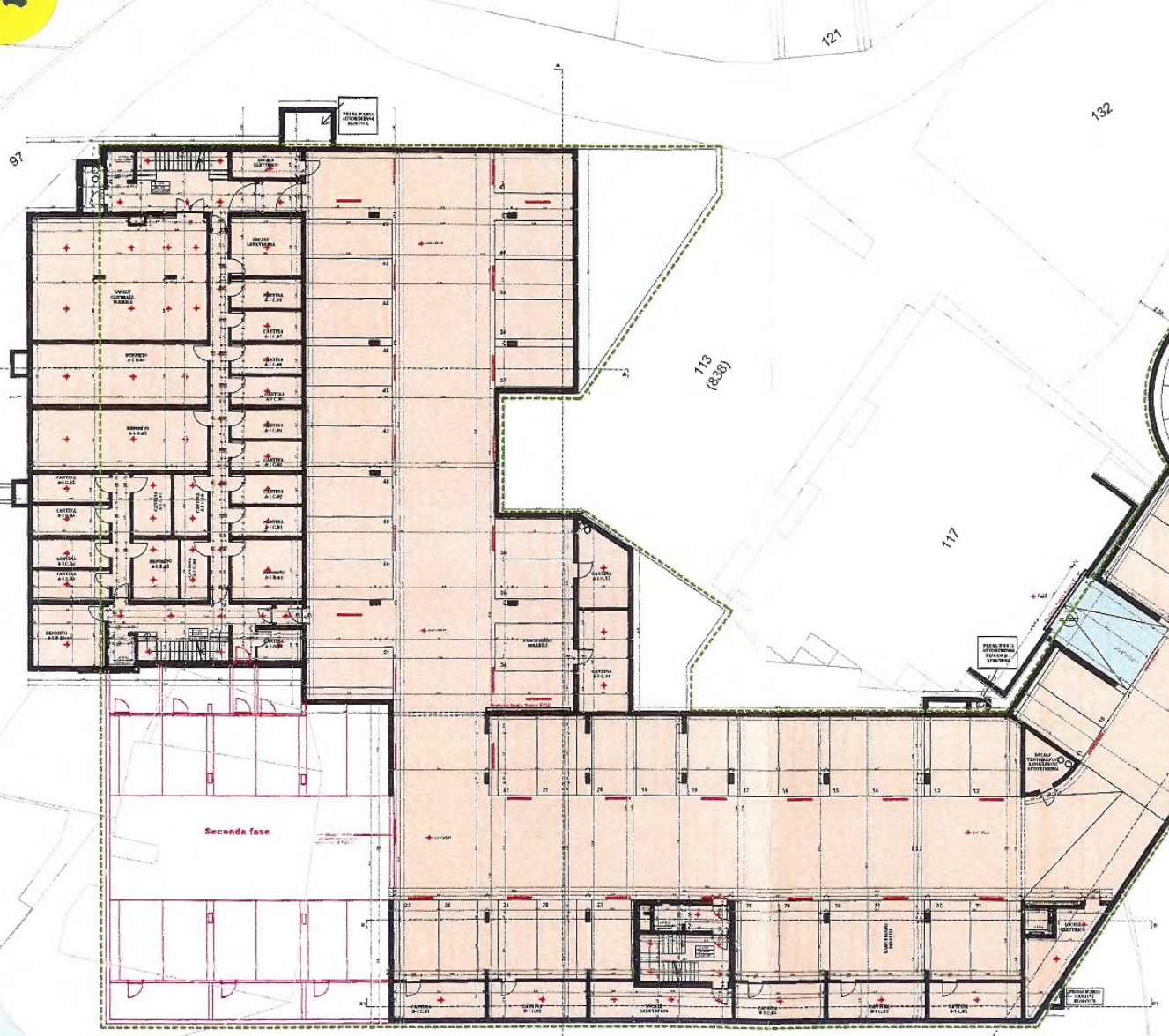


A

Monumento di Santa Lucia che dovrà essere demolito







QUARTIERE SANTA LUCIA, MASSAGNO

PIANO P-1 AUTORIMESSA
VARIANTE DI CONCILIAZIONE 1 *Scala 1:250*

Parcheggio privato: 51 posti
Cantine: 22 unità
Depositi: 5 unità + 3 unità comunali

LEGENDA :

-  AUTORIMESSA COMUNALE
-  AUTORIMESSA PRIVATA
-  INGRESSO AUTORIMESSA CONDOMINIO KORCUGA
-  AREA PROGETTO APPROVATO DC 1998



Monumento di Santa Lucia che dovrà essere demolito

